

June 2011

Safeguarding and Children in Care Project Management Board



Key Metrics Report

Performance Management and Information

Key Metrics

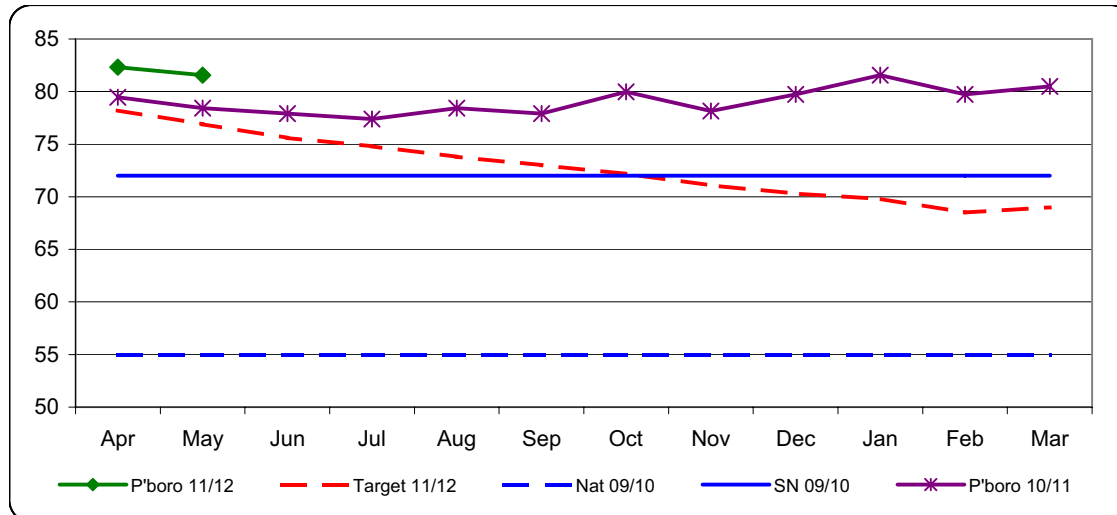
Page	Contents
3	Number of Children in Care (CiC) per 10,000 of the local population (aged under 18)
4	Number children becoming the subject of a Child Protection (CP) Plan per 10,000 of the local population (aged under 18)
5	Number of Children with a current Child Protection Plan and the proportion of CP per 10,000 of the local population (aged under 18)
6	Child Protection Plans lasting 2 years or more
7	The percentage of children referred to children's social services departments whose cases go on to initial assessments
8	Initial Assessments completed within seven working days of Referral
9	Initial Assessments completed within ten working days of Referral
10	Core Assessments completed within 35 working days of the end of the Initial Assessment or Trigger Event
11	Emotional and behavioural health of Children in care
12	The number of Children in Care with three or more placements during the year
13	Children in Care aged under 16 who had been in Care for at least 2.5 years, who were living in the same placement for at least 2 years, or are placed for adoption.
14	Vacancy Rate of Social Care Staff
15	Social Worker Case Loads - Referral & Assessment

Please Note - The targets in this document listed as 2011/12 are the targets that were previously set in 2010/11. Final targets for 2011/12 are in the process of being agreed.

Key Metrics Report

Number of Children in Care (CiC) per 10,000 of the local population (aged under 18)

Month	2010/11		2011/12			
	No. CiC	Proportion	No. CiC	Pop. <18	Proportion	Target No.
Apr	305	79.5	316	38380	82.3	300
May	301	78.4	313	38380	81.6	295
Jun	299	77.9				290
Jul	297	77.4				287
Aug	301	78.4				283
Sep	299	77.9				280
Oct	307	80.0				277
Nov	300	78.2				273
Dec	306	79.7				270
Jan	313	81.6				268
Feb	306	79.7				263
Mar	309	80.5				265



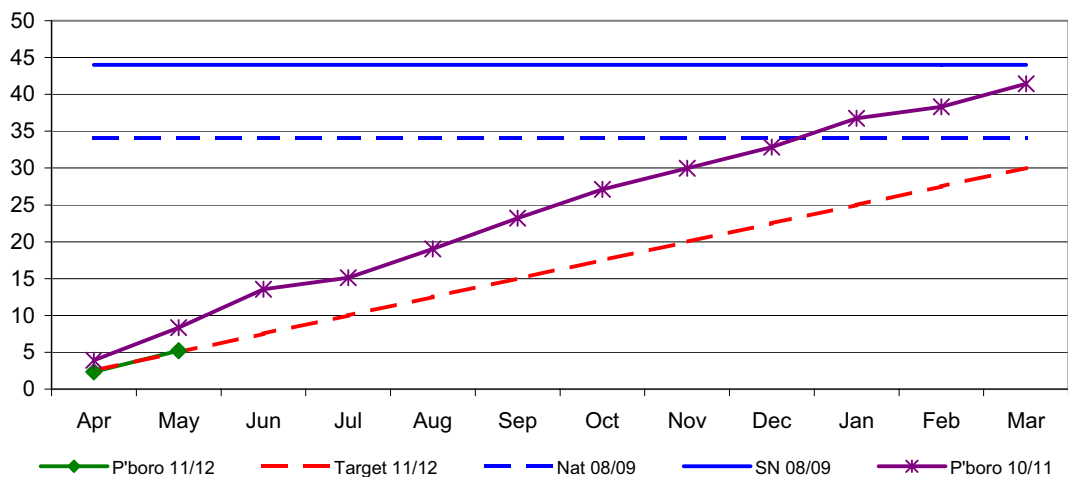
The number of children currently in care with Peterborough City Council shown as a proportion against the local population who are aged less than 18 years old.

This is a snapshot report as at the end of each month.

Key Metrics Report

Number of children becoming the subject of a Child Protection (CP) Plan per 10,000 of the local population (aged under 18)

Month	2011/12				
	CP Starters	Pop. <18	Proportion	Target No. (Cumulative)	Number per month
Apr	9	38380	2.3	10	9
May	20	38380	5.2	20	8
Jun				29	
Jul				39	
Aug				48	
Sep				58	
Oct				67	
Nov				77	
Dec				87	
Jan				96	
Feb				106	
Mar				115	



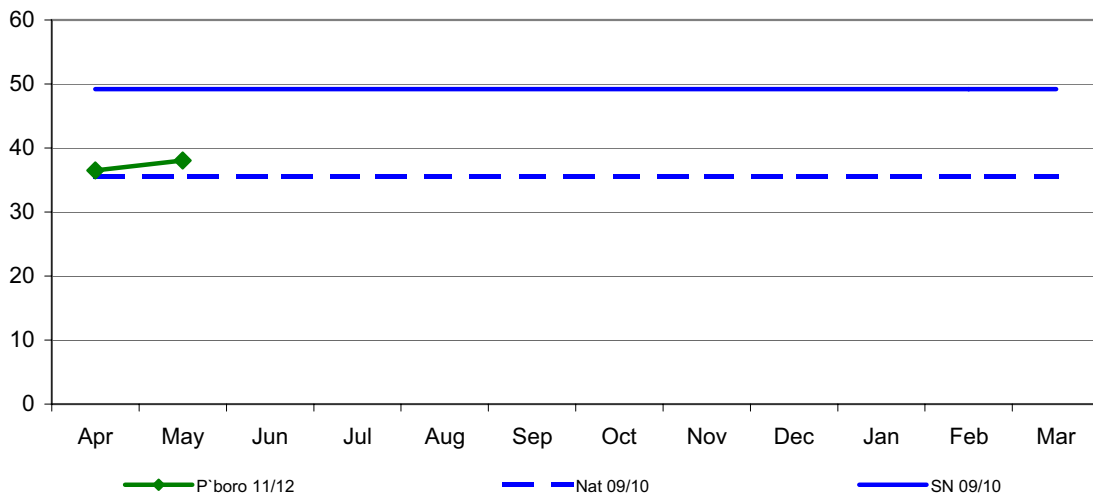
The number of children who became the subject of a Child Protection Plan with Peterborough City Council (whether they have been the subject of a plan previously or not) shown as a proportion against the local population who are aged less than 18 years old. Where a child is the subject of a child protection plan, and then ceases and begins again to be the subject of a child protection plan by the same local authority within the year ending 31 March, both episodes of being the subject of a child protection plan are counted. This is a count of all children rather than families.

The target for number of children starting to have a Child Protection Plan is 115.

This is a cumulative report throughout the financial year.

Number of Children with a current Child Protection Plan and the proportion of CP per 10,000 of the local population (aged under 18)

Month	2010/11		2011/12		
	No. with CP Plan	Proportion	No. with CP Plan	Pop. <18	Proportion
Apr	112	29.2	140	38380	36.5
May	114	29.7	146	38380	38.0
Jun	122	31.8			
Jul	125	32.6			
Aug	124	32.3			
Sep	129	33.6			
Oct	132	34.4			
Nov	135	35.2			
Dec	138	36.0			
Jan	135	35.2			
Feb	136	35.4			
Mar	139	36.5			



The number of children with a Children Protection Plan with Peterborough City Council shown as a proportion against the local population who are aged less than 18 years old.

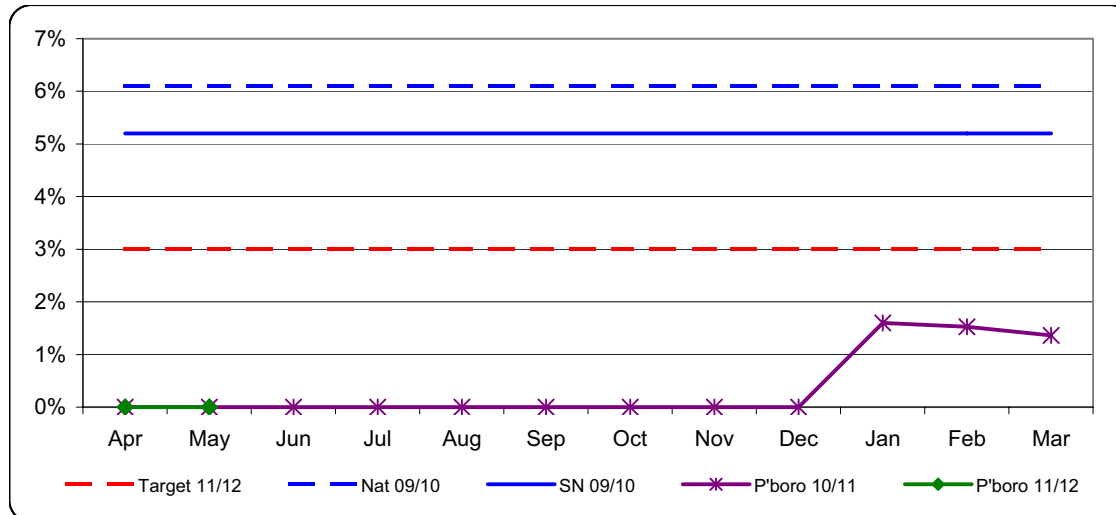
Peterborough's aim is to be within their statistical neighbour and national averages for the previous year.

This is a snapshot report as at the end of each month.

Key Metrics Report

Child Protection (CP) Plans lasting two years or more

Month	2010/11			2011/12		
	No. of De-regs	On reg 2+ yrs	%	No. of De-regs	On reg 2+ yrs	%
Apr	17	0	0.0%	9	0	0%
May	37	0	0.0%	23	0	0%
Jun	50	0	0.0%			
Jul	52	0	0.0%			
Aug	67	0	0.0%			
Sep	79	0	0.0%			
Oct	91	0	0.0%			
Nov	99	0	0.0%			
Dec	107	0	0.0%			
Jan	125	2	1.6%			
Feb	131	2	1.5%			
Mar	147	2	1.4%			



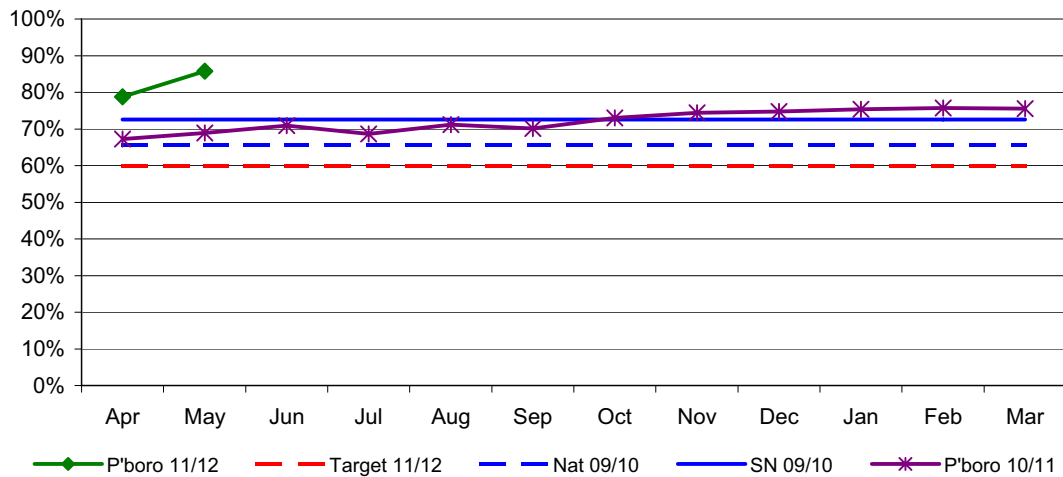
Of the children ceasing to be the subject of a Child Protection Plan during the year ending 31 March, the percentage who had been the subject of a Child Protection Plan continuously for 2 years or longer.

This is a cumulative report throughout the financial year.

Key Metrics Report

The percentage of children referred to childrens social care which went onto initial assessment

Month	2011/12 (Monthly)			2011/12 (Cumulative)		
	Referrals started	IAs Completed	%	Referrals started	IAs Completed	%
Apr	118	93	78.8%	118	93	78.8%
May	205	174	84.9%	309	265	85.8%
Jun						
Jul						
Aug						
Sep						
Oct						
Nov						
Dec						
Jan						
Feb						
Mar						



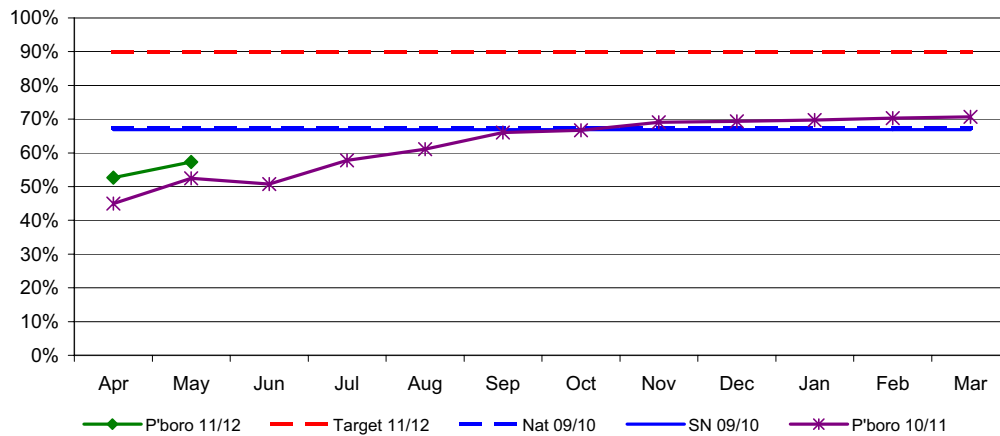
All Initial Assessments completed within the reporting period shown as a percentage of all Referrals started within the same period. Please note that this therefore does mean that the Initial Assessments that are completed necessarily correspond with the Referrals that were started. However, it is the definition prescribed by Government.

This is a cumulative report throughout the financial year.

Key Metrics Report

Initial Assessments completed within seven working days of Referral

Month	2010/11	2011/12 (Cumulative)			2011/12 (Monthly)		
	%	Completed	Completed within time	Year to Date %	Completed	Completed within time	Mthly %
Apr	45.0%	74	39	52.7%	74	39	52.7%
May	52.5%	185	106	57.3%	109	66	60.6%
Jun	50.7%						
Jul	57.8%						
Aug	61.1%						
Sep	66.1%						
Oct	66.7%						
Nov	69.1%						
Dec	69.3%						
Jan	69.7%						
Feb	70.3%						
Mar	70.7%						



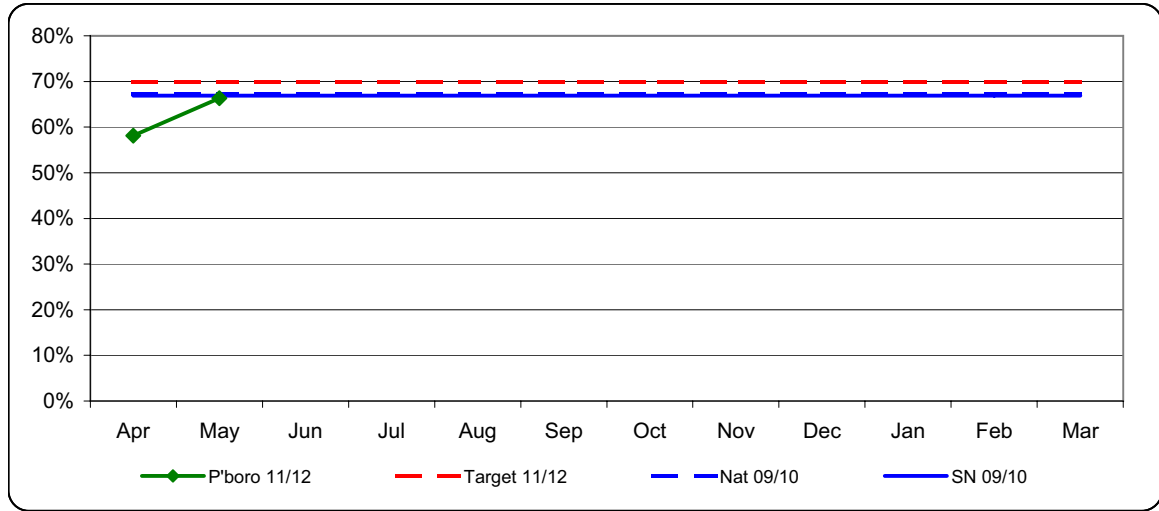
All initial assessments completed within seven working days of the referral as a percentage of all initial assessments completed within the reporting period. This report shows both the cumulative figures throughout the financial year plus the data on a monthly basis. The higher the percentage the better the result.

COMMENT

In May 2011, a new process for managing social care referrals was implemented with social care referrals being taken within the Peterborough Direct call centre. This change was anticipated to impact on performance until the process is settled. Management work is in place to support this transition.

Initial Assessments completed within ten working days of Referral

Month	2011/12 (Cumulative)			2011/12 (Monthly)		
	Completed	Completed within time	Year to Date %	Completed	Completed within time	Mthly %
Apr	74	43	58.1%	74	43	58.1%
May	185	123	66.5%	109	79	72.5%
Jun						
Jul						
Aug						
Sep						
Oct						
Nov						
Dec						
Jan						
Feb						
Mar						



All initial assessments completed within ten working days of the referral as a percentage of all initial assessments completed within the reporting period.

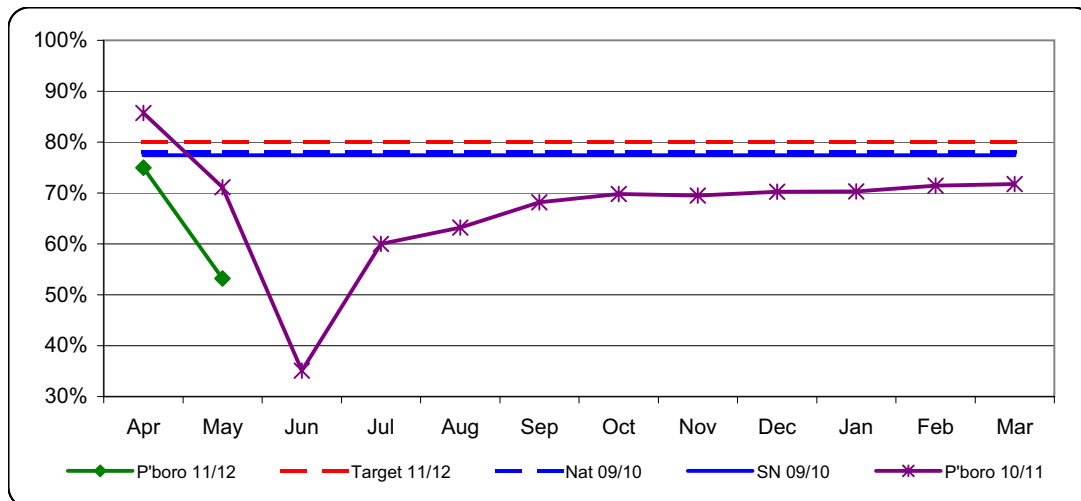
This report shows both the cumulative figures throughout the financial year plus the data on a monthly basis.

The higher the percentage the better the result.

Key Metrics Report

Core Assessments completed within 35 working days of the end of the Initial Assessment or Trigger Event

Month	2010/11	2011/12 (Cumulative)			2011/12 (Monthly)		
	%	Completed	Completed within time	Year to Date %	Completed	Completed within time	Mthly %
Apr	85.7%	12	9	75.0%	12	9	75.0%
May	71.1%	47	25	53.2%	35	16	45.7%
Jun	35.1%						
Jul	60.0%						
Aug	63.2%						
Sep	68.2%						
Oct	69.8%						
Nov	69.5%						
Dec	70.3%						
Jan	70.3%						
Feb	71.5%						
Mar	71.8%						



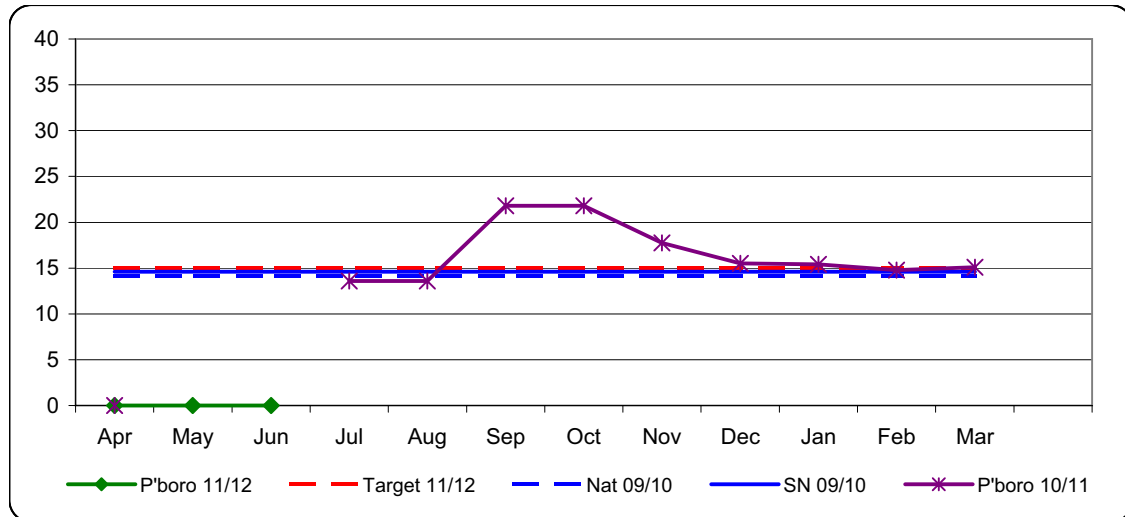
Of the core assessments completed within the reporting period, the number that had been completed within 35 working days of their commencement. A core assessment is deemed to have commenced at the point at which the initial assessment ended; or a strategy discussion decided to initiate enquiries under section 47 of the Children Act 1989; or new information obtained on an open case indicates that a core assessment should be undertaken.

This is a cumulative report throughout the financial year. The higher the percentage the better the result.

Key Metrics Report

Emotional and behavioural health of Children in Care

Month	2011/12		
	Sum of All SDQ Scores	No. SDQs completed	Average Score
Apr			
May			
Jun			
Jul			
Aug			
Sep			
Oct			
Nov			
Dec			
Jan			
Feb			
Mar			

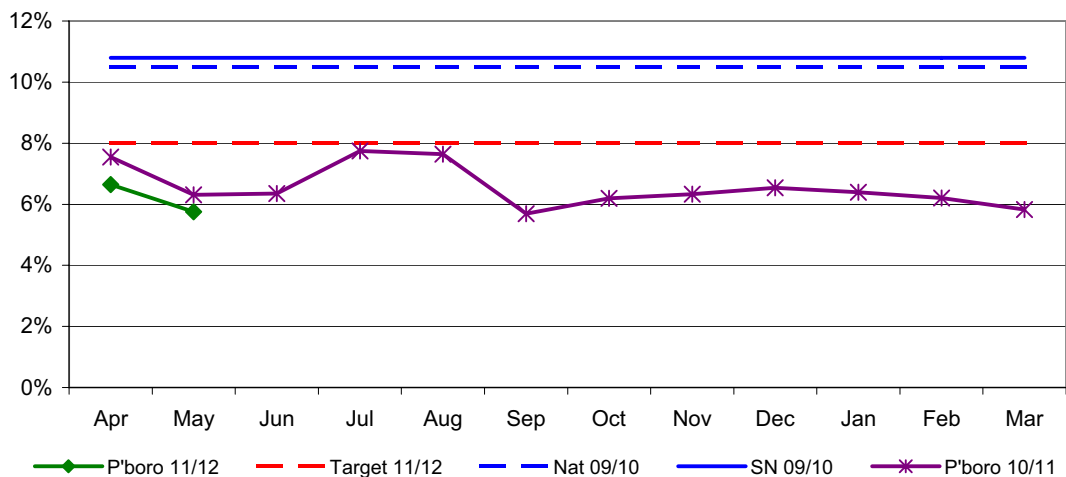


The indicator result is the average of the Strengths and Difficulties Questionnaire (SDQ) score for children aged between 4 and 16 years old at the end of each month and who had been in Care for 12 months or more at that time and have had a completed SDQ. Lower performance is better, with a target of an average score of 15.

Key Metrics Report

The number of Children in Care (CiC) with three or more placements during the year

Month	2010/11			2011/12		
	CiC	3 or more places	%	CiC	3 or more places	%
Apr	305	23	7.5%	316	21	6.6%
May	301	19	6.3%	313	18	5.8%
Jun	299	19	6.4%			
Jul	297	23	7.7%			
Aug	301	23	7.6%			
Sep	299	17	5.7%			
Oct	307	19	6.2%			
Nov	300	19	6.3%			
Dec	306	20	6.5%			
Jan	313	20	6.4%			
Feb	306	19	6.2%			
Mar	309	18	5.8%			



The percentage of children looked after at the end of each month with three or more separate placements during the year. All placements of 24 hours or more are counted, regardless of duration. Any placements that were already open at the beginning of the year, and any which were open at the end of the year are included.

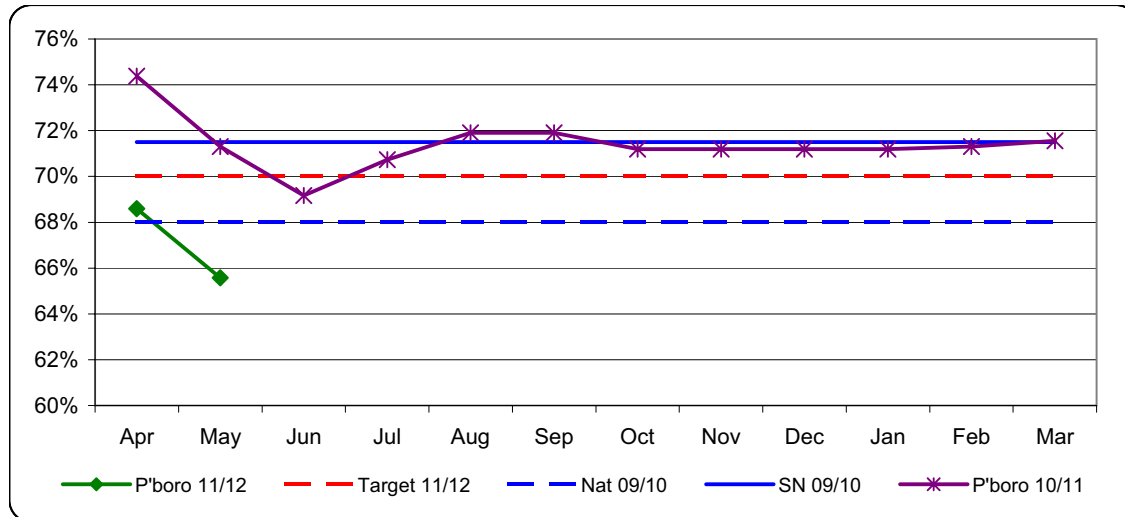
All placements regarded as 'temporary' are included; the only exceptions being temporary periods on holiday or in hospital where the child then returned as planned to the previous placement

This is a snapshot report of the current state of play as at the end of the appropriate month. The smaller the percentage the better the result.

Key Metrics Report

Children in Care aged under 16 who had been in Care for at least 2.5 years, who were living in the same placement for at least 2 years, or are placed for adoption.

Month	2010/11			2011/12		
	CiC <16yrs old	Place 2+ yrs/ adoption	%	CiC <16yrs old	Place 2+ yrs/ adoption	%
Apr	121	90	74.4%	121	83	68.6%
May	122	87	71.3%	122	80	65.6%
Jun	120	83	69.2%			
Jul	123	87	70.7%			
Aug	121	87	71.9%			
Sep	121	87	71.9%			
Oct	118	84	71.2%			
Nov	118	84	71.2%			
Dec	118	84	71.2%			
Jan	118	84	71.2%			
Feb	115	82	71.3%			
Mar	116	83	71.6%			



Of the Children in Care aged under 16 years old who had been in care for at least 2.5 years (excluding respite) those who had been in their current placement for at least 2 years or are placed for adoption.

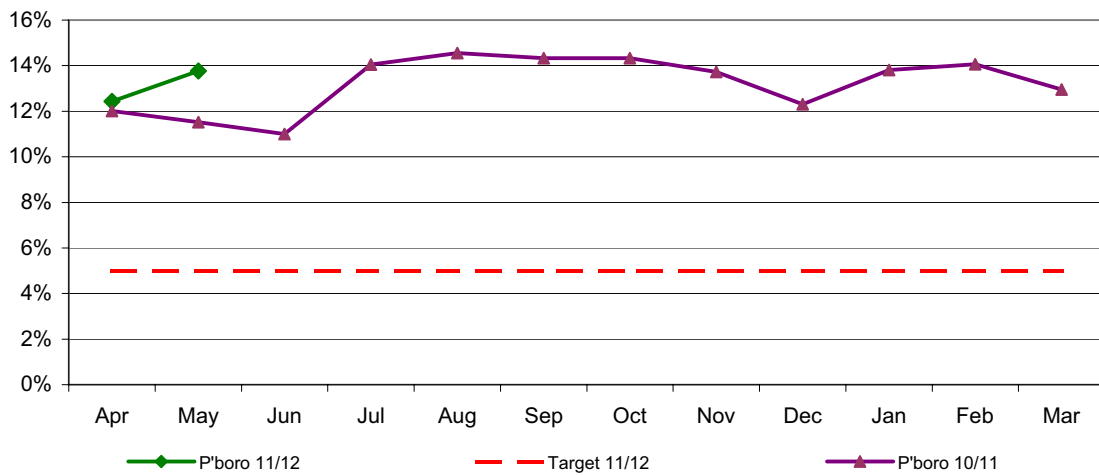
This is a snapshot report as at the end of each month.

The higher the percentage the better the result.

Key Metrics Report

Vacancy Rate of Social Care Staff

Month	2010/11			2011/12		
	Staff Complement	Vacant Posts	%	Staff Complement	Vacant Posts	%
Apr	179	21.5	12.0%	193	24	12.4%
May	177.9	20.5	11.5%	188.8	26	13.8%
Jun	172.8	19	11.0%			
Jul	185	26	14.1%			
Aug	189	27.5	14.6%			
Sep	192	27.5	14.3%			
Oct	192	27.5	14.3%			
Nov	193	26.5	13.7%			
Dec	191	23.5	12.3%			
Jan	192	26.5	13.8%			
Feb	192	27	14.1%			
Mar	193	25	13.0%			



The number of vacant posts in the fieldwork teams (all staff) as a percentage of all roles within these teams.

This is a snapshot report as at the end of the month.

The lower the percentage the better the result.

These figures include vacancies which may be currently covered by agency staff.

Key Metrics Report

Referral and Assessment - Social Care Caseloads

09-Jun-11				
Social Worker	Individual Cases	Previous Individual Cases (8 May 11)	Family Groups	Previous Family Groups (8 May 11)
Adeyinka Aina	26	19	14	N/a
Debbie Dickson	4	N/a	4	N/a
Deborah Gaunt	30	30	24	N/a
Fatima Haji	28	23	21	N/a
Helen Johnson	21	22	20	N/a
Helen Sharpe	30	37	27	N/a
Janes Van Vollenstee	18	17	15	N/a
Josephine Oakey	1	1	1	N/a
Joy Edwards	30	32	21	N/a
Karen Beeke	24	21	20	N/a
Kathryn Lilley	28	16	21	N/a
Louise Mason	10	N/a	8	N/a
Mandy Huskisson	8	11	6	N/a
Nicola Ross	6	N/a	5	N/a
Patricia Pearce	1	N/a	1	N/a
Ross Gowers	23	21	20	N/a
Stephney Fogarty	24	13	20	N/a
Susan Holmes	24	N/a	14	N/a
TOTAL	336	281	262	

Target Caseload - 25

This page is intentionally left blank